

Transportation (Chap. 23)

- Over Half of Railroad Employees
- Run Trains – Over the Road, Yards/Terminals, and Local
- Crew Districts – Increased in Recent Years
- District (Sub-Division) Organization

Trainmaster

Terminal Trainmaster ?

Road Foreman of Engines

- Division Organization

Larger than Districts or Sub-Divisions

General Manager of Superintendant

Trainmasters

Terminal Trainmaster/Yard Master

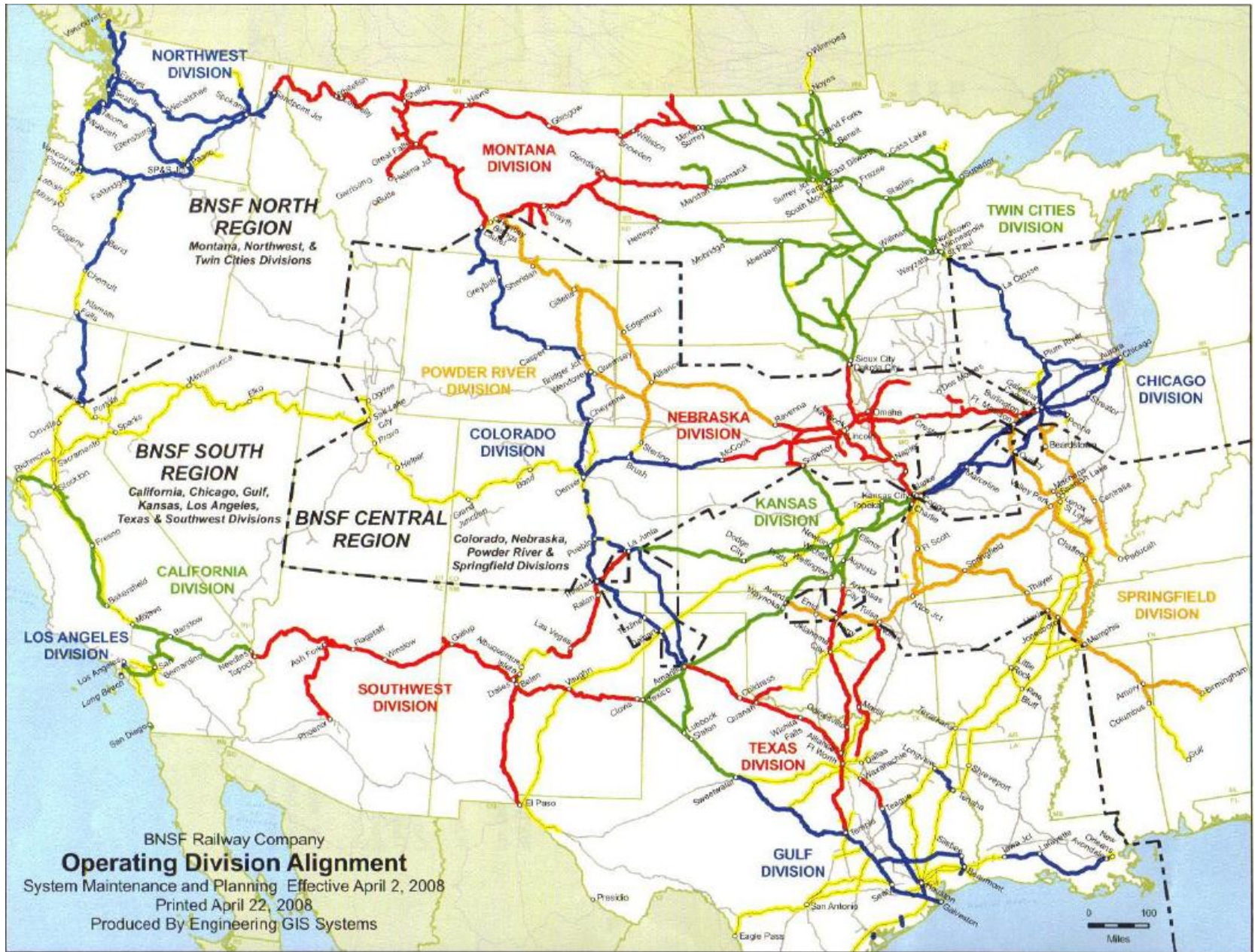
Road Foreman of Engines

Chief Dispatcher

- Regional Organization

Maybe if Very Large Railroad

Maybe if Business Dictates



BNSF Railway Company
Operating Division Alignment
 System Maintenance and Planning Effective April 2, 2008
 Printed April 22, 2008
 Produced By Engineering GIS Systems

- Transportation Headquarters

Locomotive Distribution

Car Distribution

Crew Calling






Train Dispatching

Station Agency

Customer Service

Central Yard Office

• Documents and Rules

DOCUMENT	EXAMPLES OF CONTENTS:	ADDRESSED TO / GOVERNS:	TYPICAL TIME SPAN:	ISSUED UNDER AUTHORITY OF: _____ BY: _____ VIA: _____
TRAIN ORDER 	"NO. 25 TAKE SIDING AND MEET EXTRA 3342 EAST AT G" <u>CAN SUPERSEDE:</u> SIGNAL INDICATION RIGHT BY CLASS OF TRAIN SCHEDULE	CONDUCTOR AND ENGINEER OF AFFECTED TRAINS	FROM ISSUE ("COMPLETE") UNTIL FULFILLED (MINUTES TO HOURS)	SUPERINTENDENT ↓ CHIEF TRAIN DISPATCHER ↓ OPERATORS
BULLETIN ORDER 	TEMPORARY SLOW ORDER LOCATIONS SCHEDULE MODIFICATIONS <u>CAN SUPERSEDE:</u> NOTICES TO EMPLOYEES	TRAIN SERVICE EMPLOYEES ALL DIVISION EMPLOYEES	FROM ISSUE UNTIL TERMINATION OR INCORPORATION IN THE TIMETABLE (DAYS-WEEKS)	SUPERINTENDENT ↓ TRAINMASTERS
BULLETIN NOTICE 	SPECIAL INSTRUCTIONS SCHEDULES <u>CAN SUPERSEDE:</u> SCHEDULES TIME & CLASS OF TRAINS SPECIAL INSTRUCTIONS SPEED RESTRICTIONS SPECIAL SIGNAL INDICATIONS DESIGNATION OF SUPERIOR DIRECTION	ALL DIVISION EMPLOYEES CONCERNED WITH TRAIN OPERATIONS	FROM EFFECTIVE DATE & TIME UNTIL NEXT TIMETABLE (3 TO 6 MONTHS)	GENERAL MANAGER OF TRANSPORTATION ↓ SUPERINTENDENT
EMPLOYEES TIMETABLE 	<u>CAN SUPERSEDE:</u> BOOK OF RULES			
BOOK OF RULES 	GENERAL RULES (A THRU XI) CONDUCT OF EMPLOYEES <u>OPERATING RULES</u> (1 THRU 1100) TIMETABLE / TRAIN ORDER OPERATION STANDARD SIGNAL ASPECTS / INDICATIONS HAND, WHISTLE SIGNALS DUTIES OF EMPLOYEES	ALL EMPLOYEES IN OPERATIONS DEPARTMENT	UNTIL MODIFIED (DECADES)	V.P. OR GENERAL MGR. IN CHARGE OF OPERATIONS

- Conductors

- Engineers

- Transportation Planning / Service Design

Maintenance of Blocking and Classification Tables

Maintenance of Train Schedules

Monitoring of Train Time Performance /
Transportation Efficiency

Support for Differential Service

Numerous Small but Critical Functions

- A Railroad's Transportation Philosophy

Efficiently Coordinates

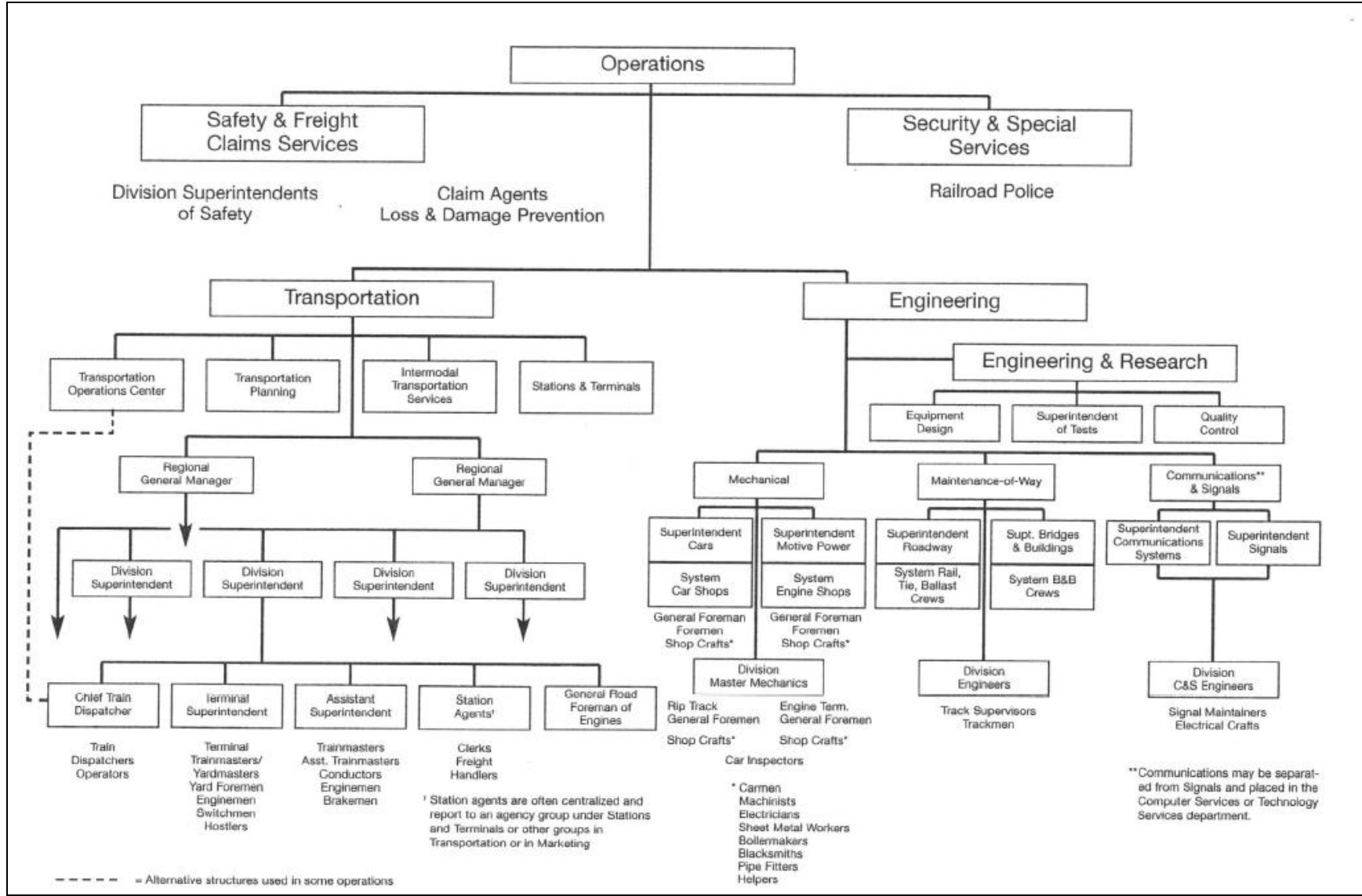
Optimizing

Implement Plan

Scheduled ???

Engineering and Mechanical Departments (Chap. 24)

- Vice President – Engineering
- Vice President – Mechanical



- Engineering Design

Tests, QC, Construction, Equipment, D&C

- Maintenance-of-Way (Engineering)

Chief Engineer

Chief Mechanical Officer

- Division Engineer and ADEs

Roadmasters (Track Supervisors)

- System Crews
- Communication and Signals

- Mechanical Department
(Motive Power and Cars)
- Design / Select Maintenance Service
- Mechanized

- Division Master Mechanics

Carman

Machinists and Electricians

Metal-Working Trades

Storekeepers, Equipment Operators,
Helpers

- Strategic Planning

Inter-Related

Creative

Market (Sell)